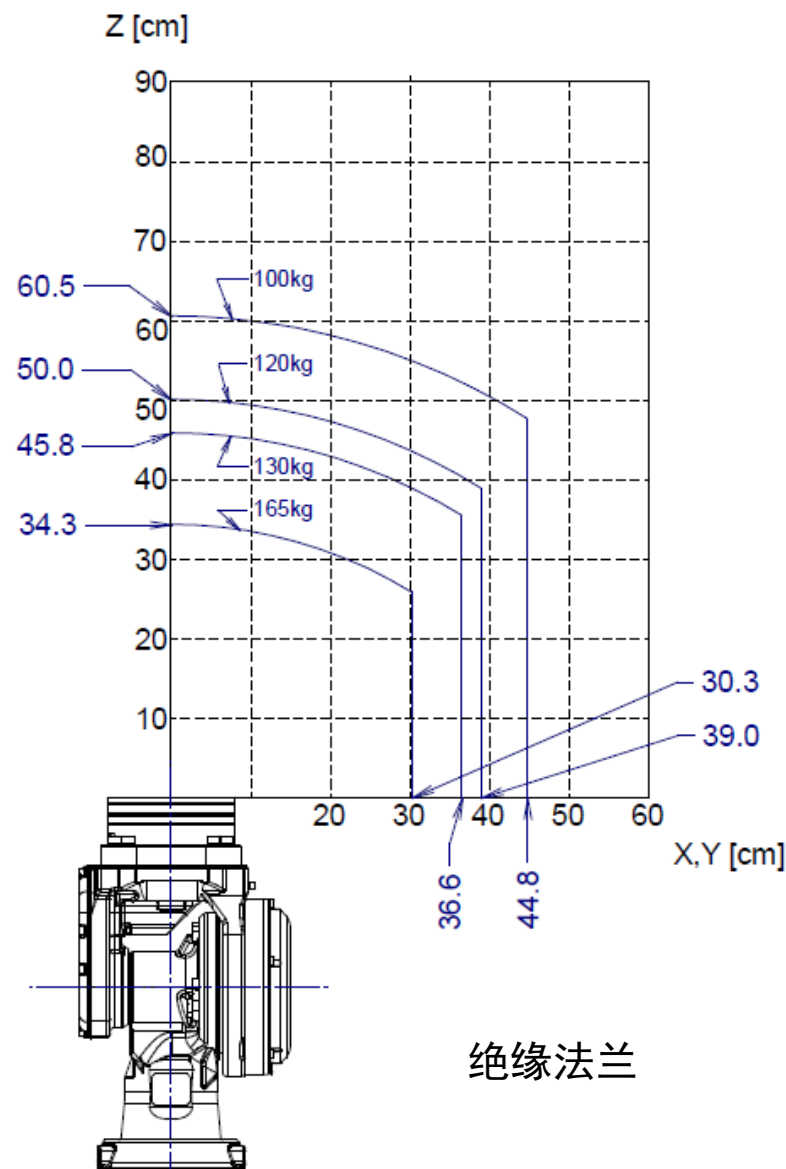
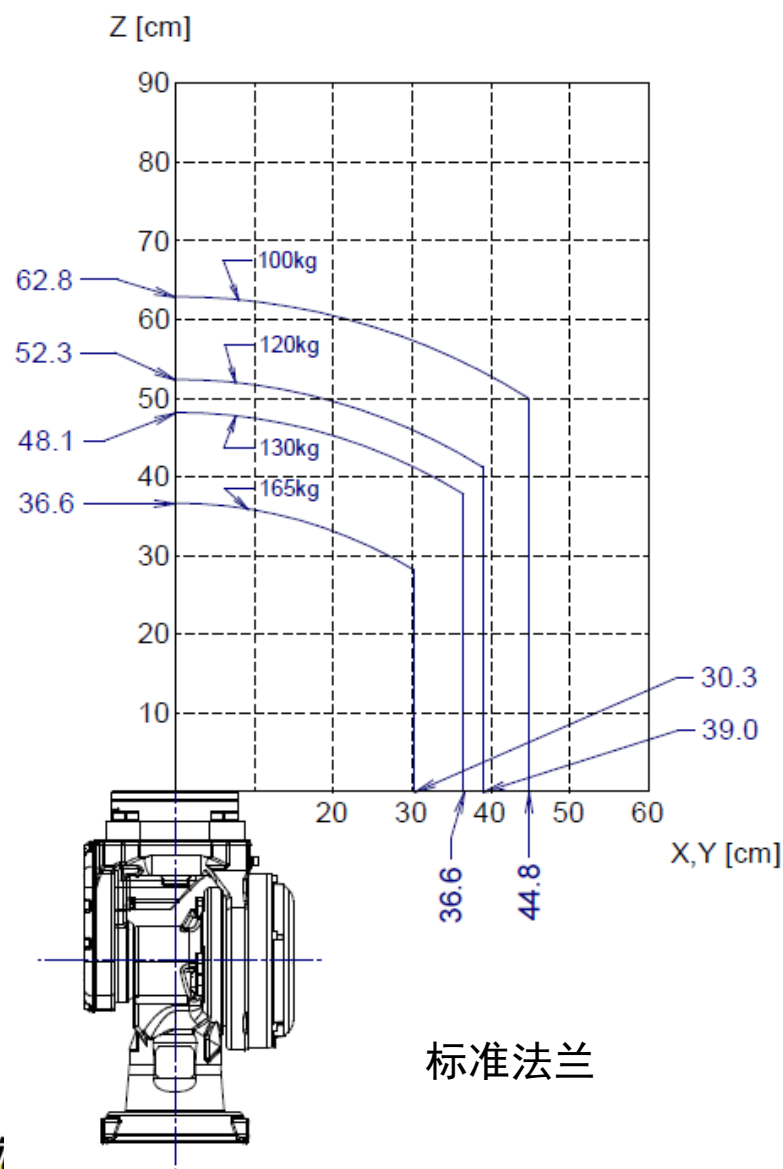
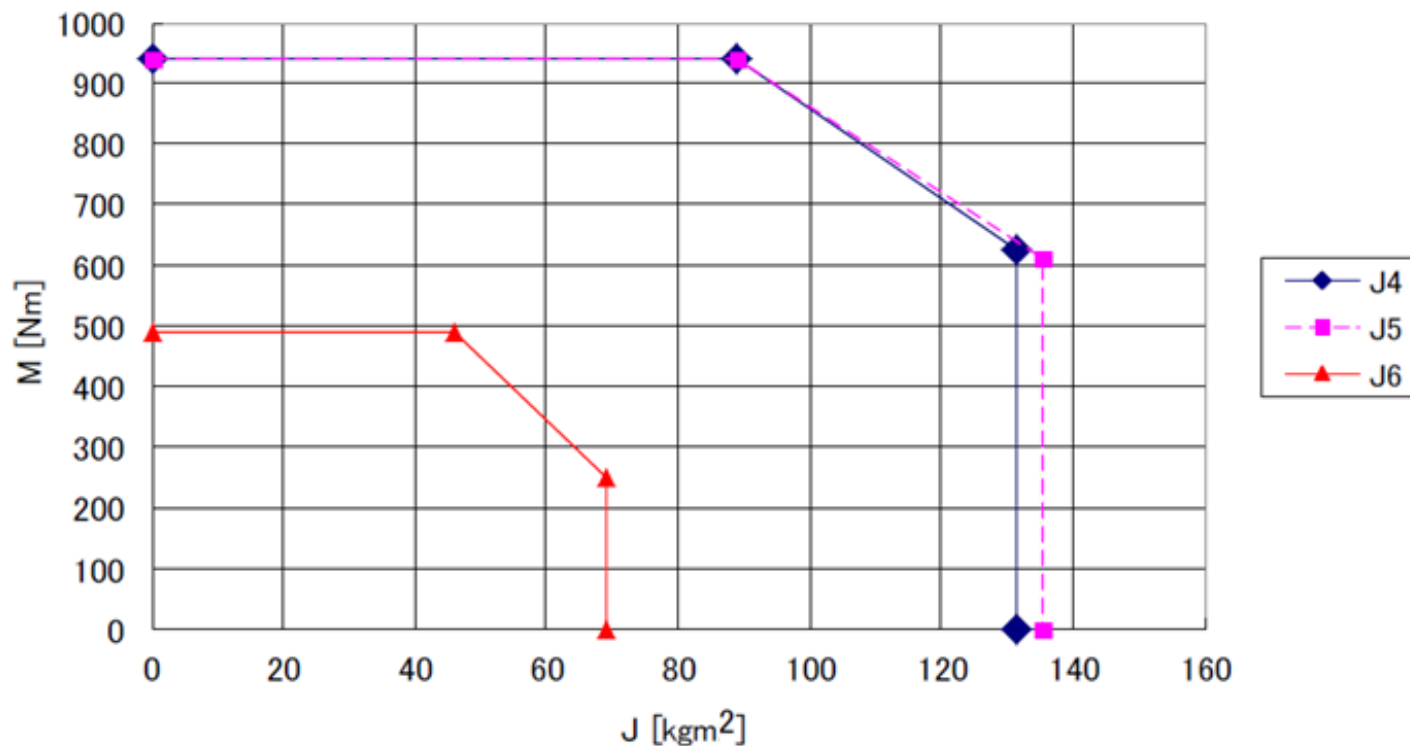


FANUC机器人 R-2000*i*C/165R

手腕允许负载曲线图



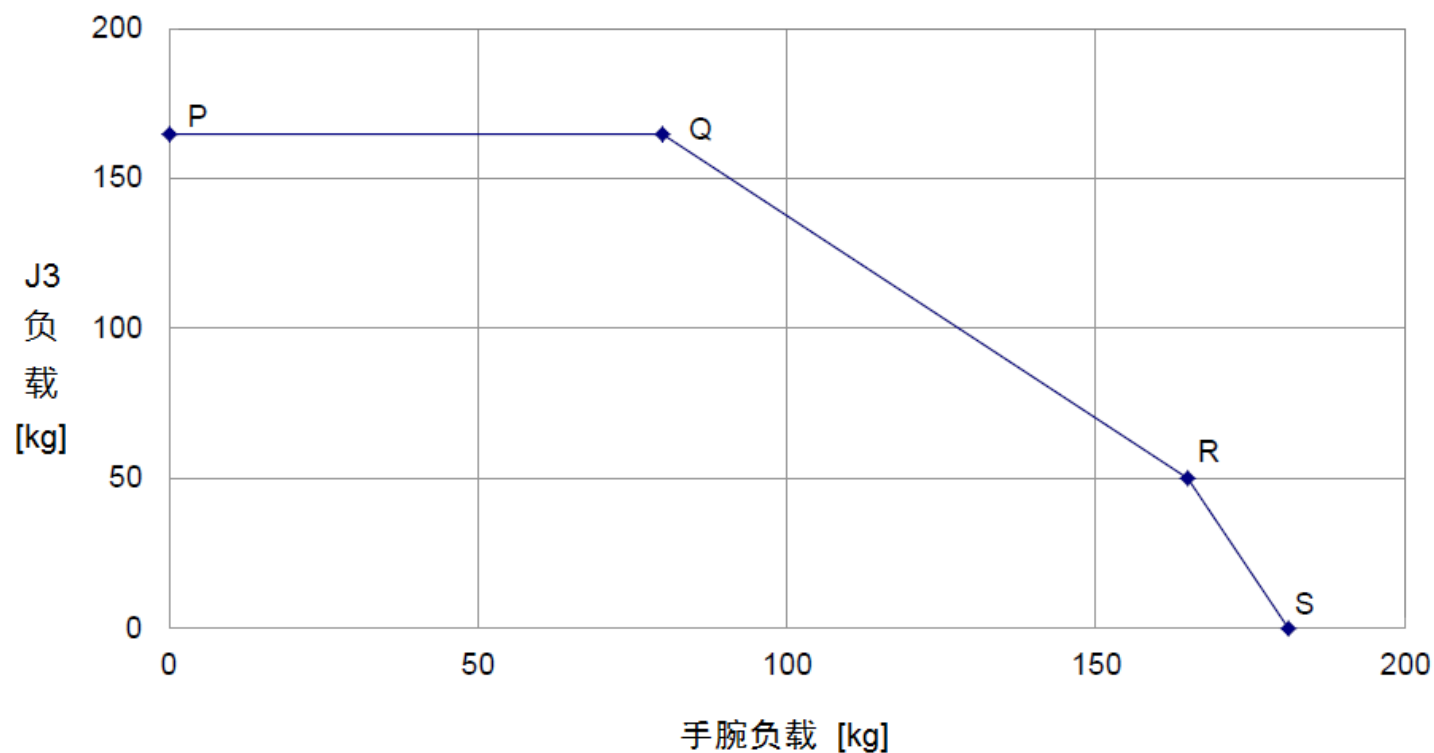
复合负载曲线图（标准惯量模式）



标准规格数据

转矩 (Nm)			惯量 (kgm²)			质量 (kg)
J4	J5	J6	J4	J5	J6	
940	940	490	89	89	46	165

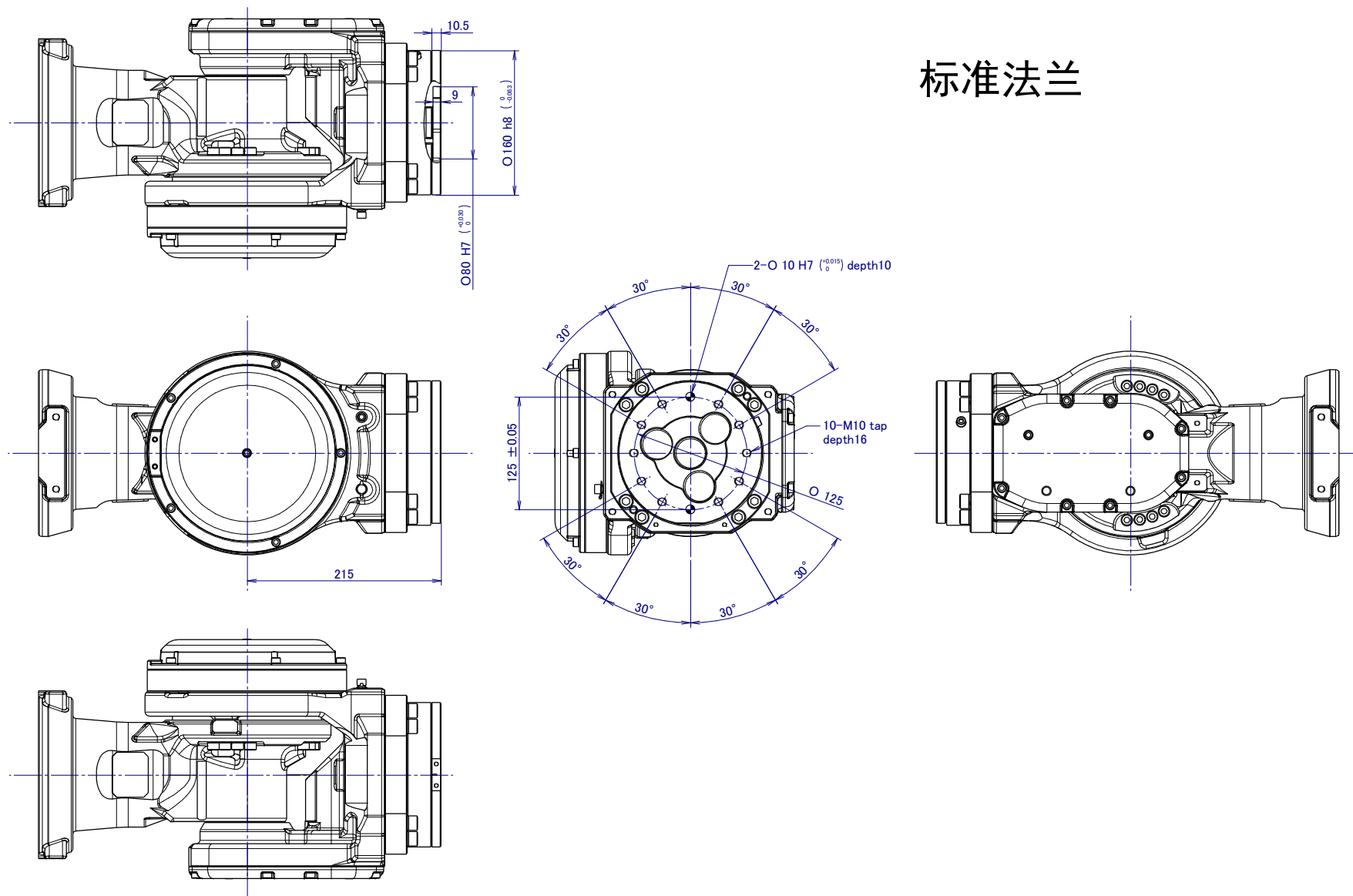
手腕负载和J3负载曲线图



	P	Q	R	S
手腕负载	0	80	160	181.5
J3 负载	165	165	50	0

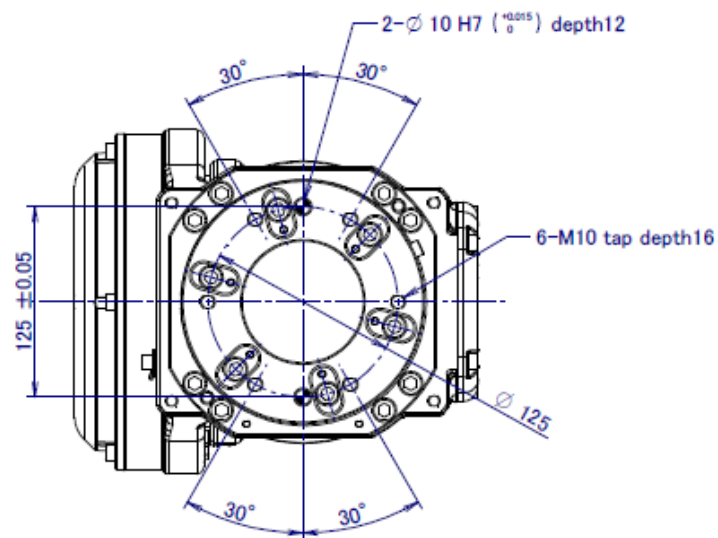
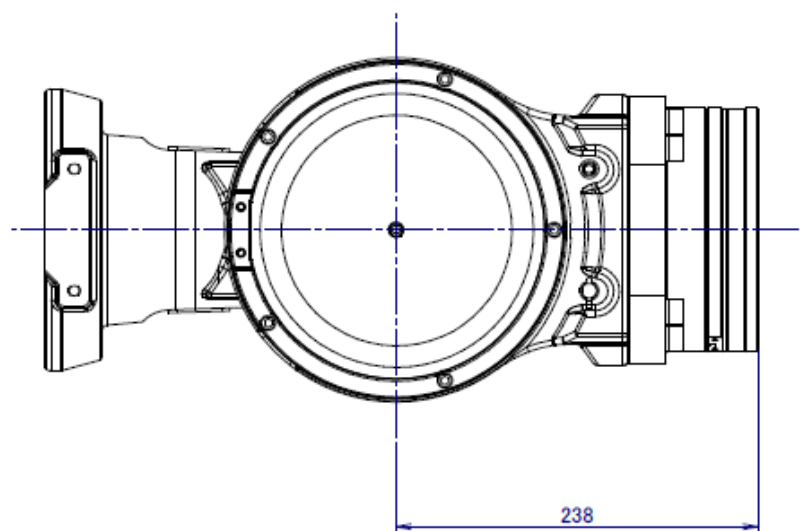
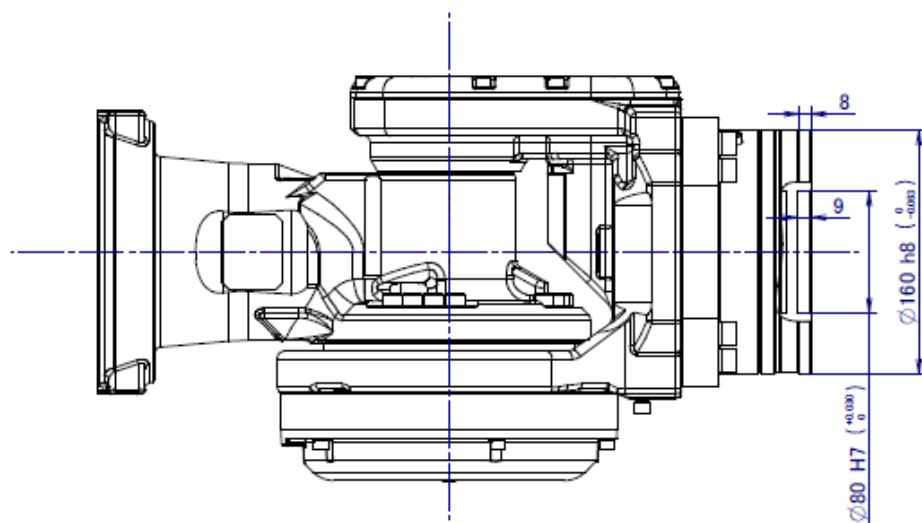
末端执行器安装面尺寸

标准法兰

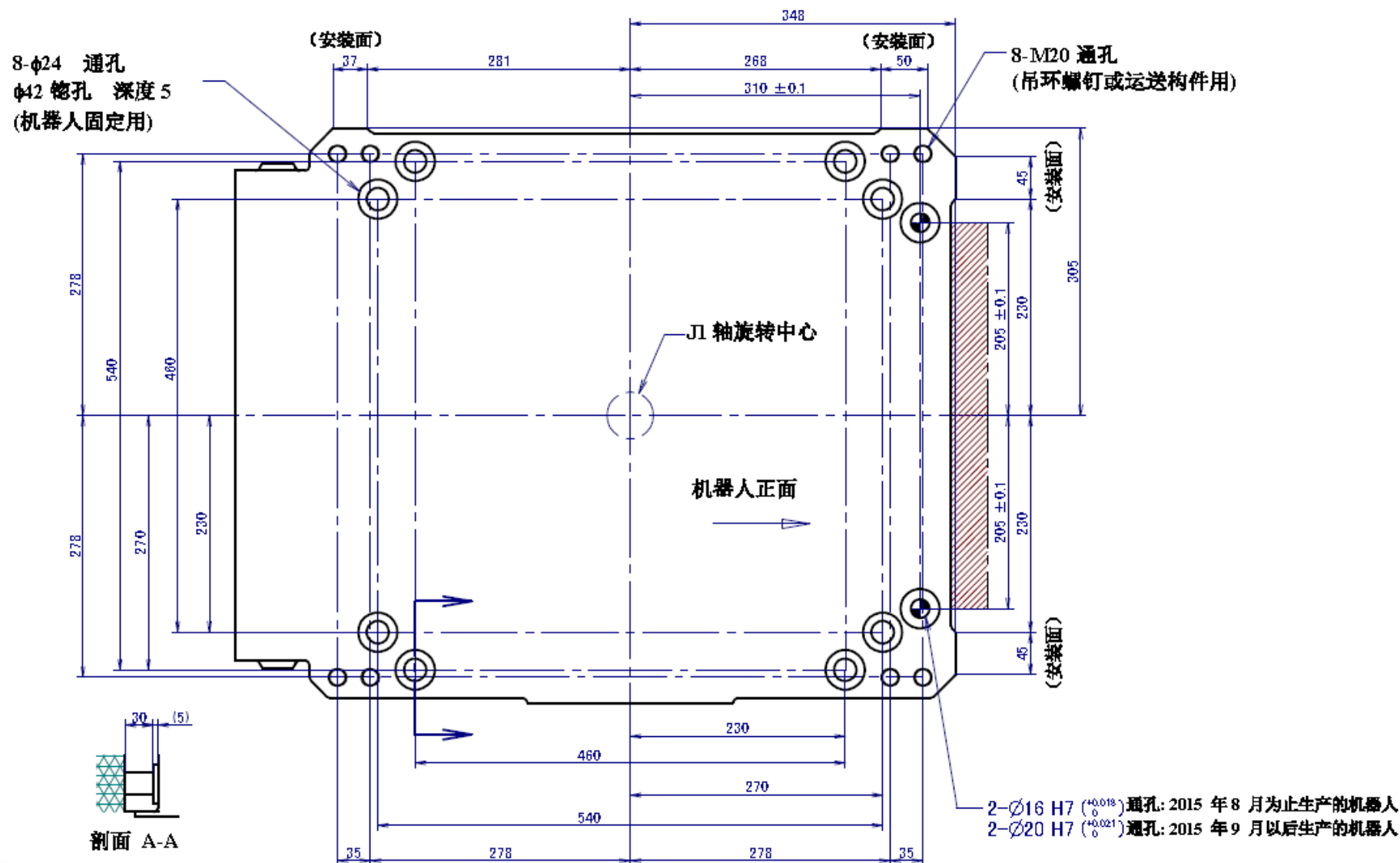


末端执行器安装面尺寸

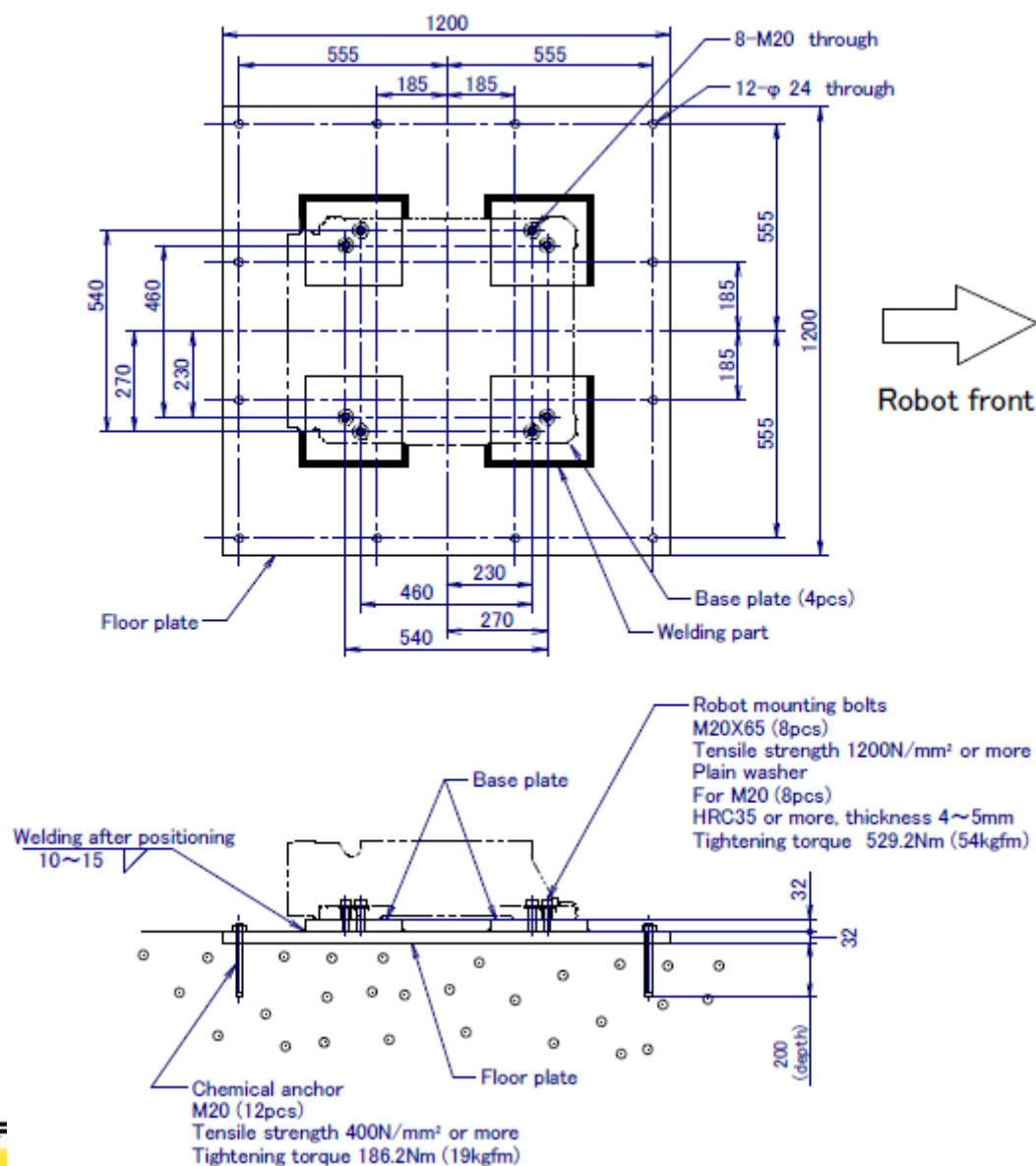
绝缘法兰



安装尺寸（底座）



标准安装底板尺寸



设备安装面尺寸

